

SPECint'95

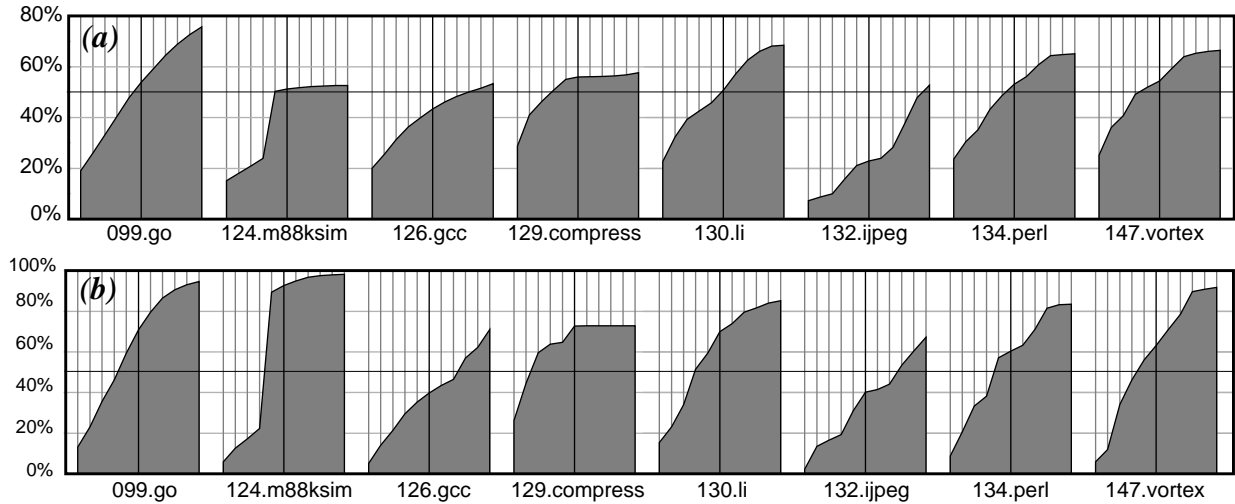


Figure 1. (a) distribution of true dependence store distances (b) distribution of output dependence store distances. Range is 8 to 8K, samples are taken at powers of 2.

SPECfp'95

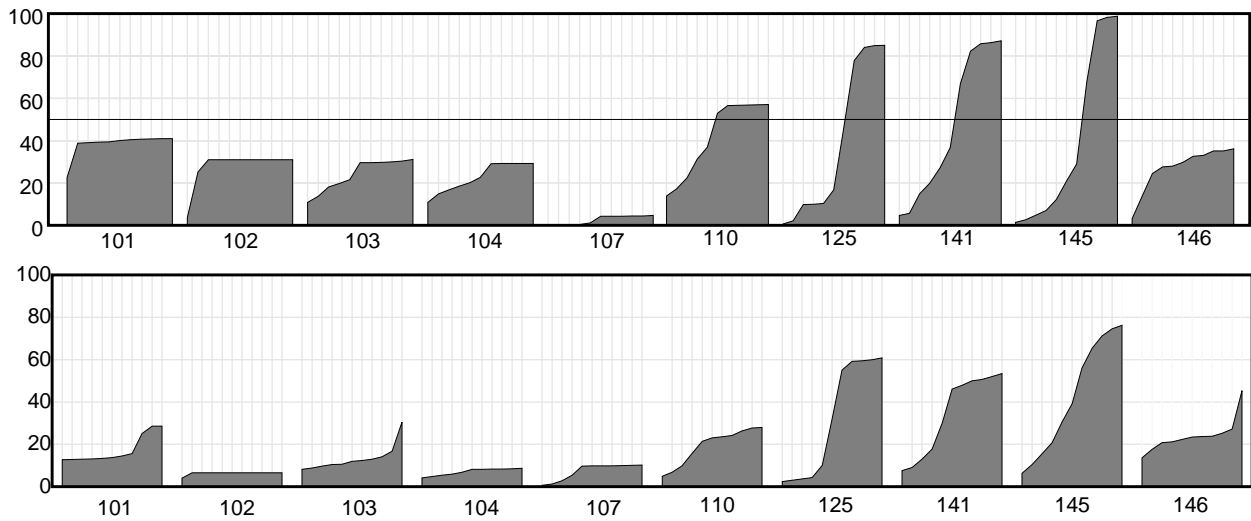


Figure 2. (a) distribution of true dependence store distances (b) distribution of output dependence store distances. Range is 8 to 8K, samples are taken at powers of 2